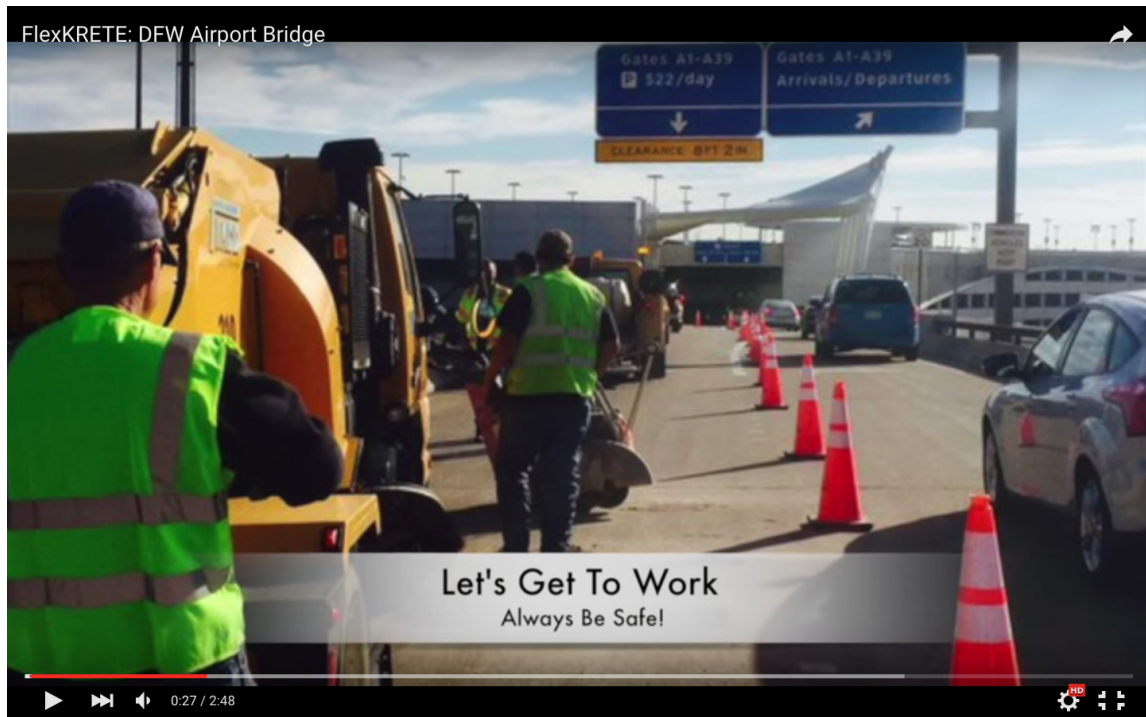


Riddled with potholes is the best way to describe this overpass bridge at Dallas-Fort Worth Int'l. airport. See for yourself in the first 10 seconds of this repair video captured the day of the project.

## Major Pothole Repair: DFW Int'l Terminal A



**The Dallas-Fort Worth International Airport** north entry to the Terminal A bridge had 80+ potholes that spanned the nearly 300 feet long crossover. It's a great example of how other repair materials failed but is the ideal setting to illustrate the advantages of the FlexKRETE's fast-set, high-strength, and long-lasting Concrete Repair System.

**This above video illustrates actual pothole repairs** being made while one lane of the bridge traffic remained open. Resurfacing the entire overpass was considered, but deemed too costly, time consuming and disruptive. Using FlexKRETE, work crews can complete this repair in a single day while keeping traffic moving.

FlexKRETE is spec'd at DFW for concrete repair, and DFW contractors have relied on FlexKRETE for years as their 'go-to' concrete repair product because it's easy to use, has unmatched strength, durability, flexibility and adhesion characteristics. Additionally, the area can be returned to traffic in as little as 15 minutes upon job completion.